



The iPad: A Sound Investment for the Music Therapist

Wade Richards, LCAT, MT-BC

Saturday, November 19th

Overview of the presentation

- ❖ Functionality
- ❖ Portability
- ❖ Applications for therapeutic experiences
- ❖ Assisting students who own an iPad
- ❖ Reimbursement documents



Functionality

- ❖ a tablet designed for audio-visual media
- ❖ multitouch display
- ❖ wireless and internet options
- ❖ fingerprint and scratch resistant with options for clear covers
- ❖ full screen rotation



Functionality: Limitations



- * no ethernet or USB port
- * no CD or DVD drive
- * special printer needed (AirPrint enabled)

Functionality: Audio and Output



- ❖ built in microphone
- ❖ two internal speakers
- ❖ jack for headphones
- ❖ bluetooth interface for wireless keyboard or headphones

Functionality: Power and Storage



- ❖ Estimated 10 hours of play; 140 hours of audio playback
- ❖ Batteries lose power over time. Replacement options. Refurbished unit by Apple but no data carry over. Other companies will offer battery replacement or tech support to do it yourself.
- ❖ 16, 32, or 64 GB
- ❖ Expand your storage with a flash drive

Functionality: Optional Accessories



- ❖ camera connection kit (Apple)
- ❖ adapter for USB dock and SD card
- ❖ VGA adapter for external monitors and projectors
- ❖ HDMI adapter
- ❖ wireless keyboard, headphones
- ❖ iPad stylus

Portability

- * endless number of instrument options to bring with you
- * reduce cost of purchasing instruments when an APP can provide the same therapeutic benefit
- * bring your library of music with you
- * media in a moment (watch a video of a requested song, find the lyrics, chords, or TAB).
- * access websites for visual / auditory support



Portability

- ❖ lightweight
- ❖ access wireless internet in a majority of settings
- ❖ songwriting and materials in one device



Applications: What is included?



* Safari



* Mail



* iPod



* iTunes



* App Store



* Video



* YouTube



* Photos



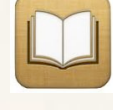
* Maps



* Notes



* Calendar



* iBooks



* Contacts



* Spotlight search

Applications: Wade's Top Music App Picks



❖ Six Strings



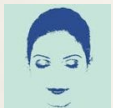
❖ Pianist Pro



❖ Garage Band



❖ Guitar Toolkit



❖ Relax and Rest



❖ Art Studio



❖ Pattern Music



❖ Zen Sound



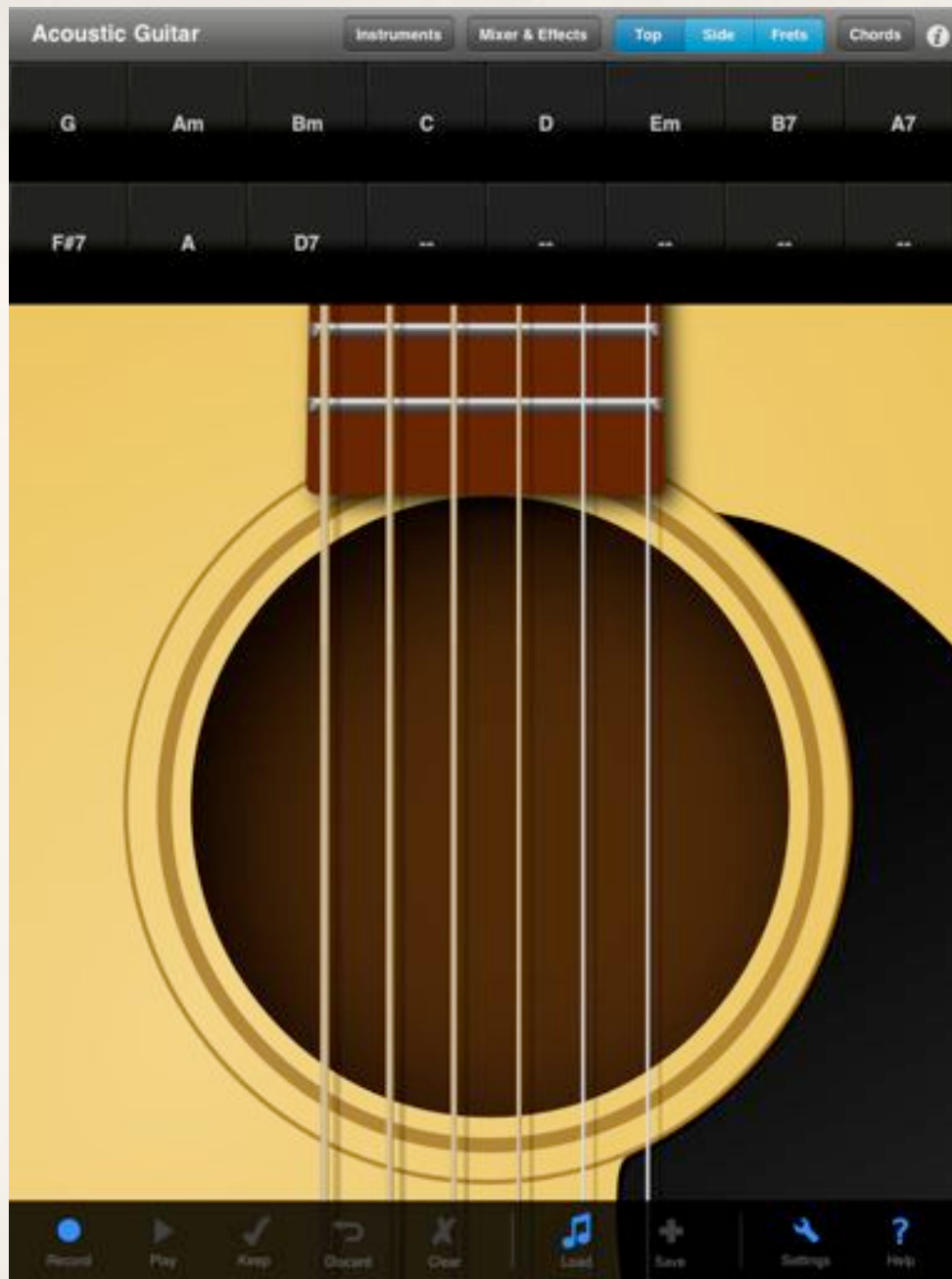
❖ AmpliTube

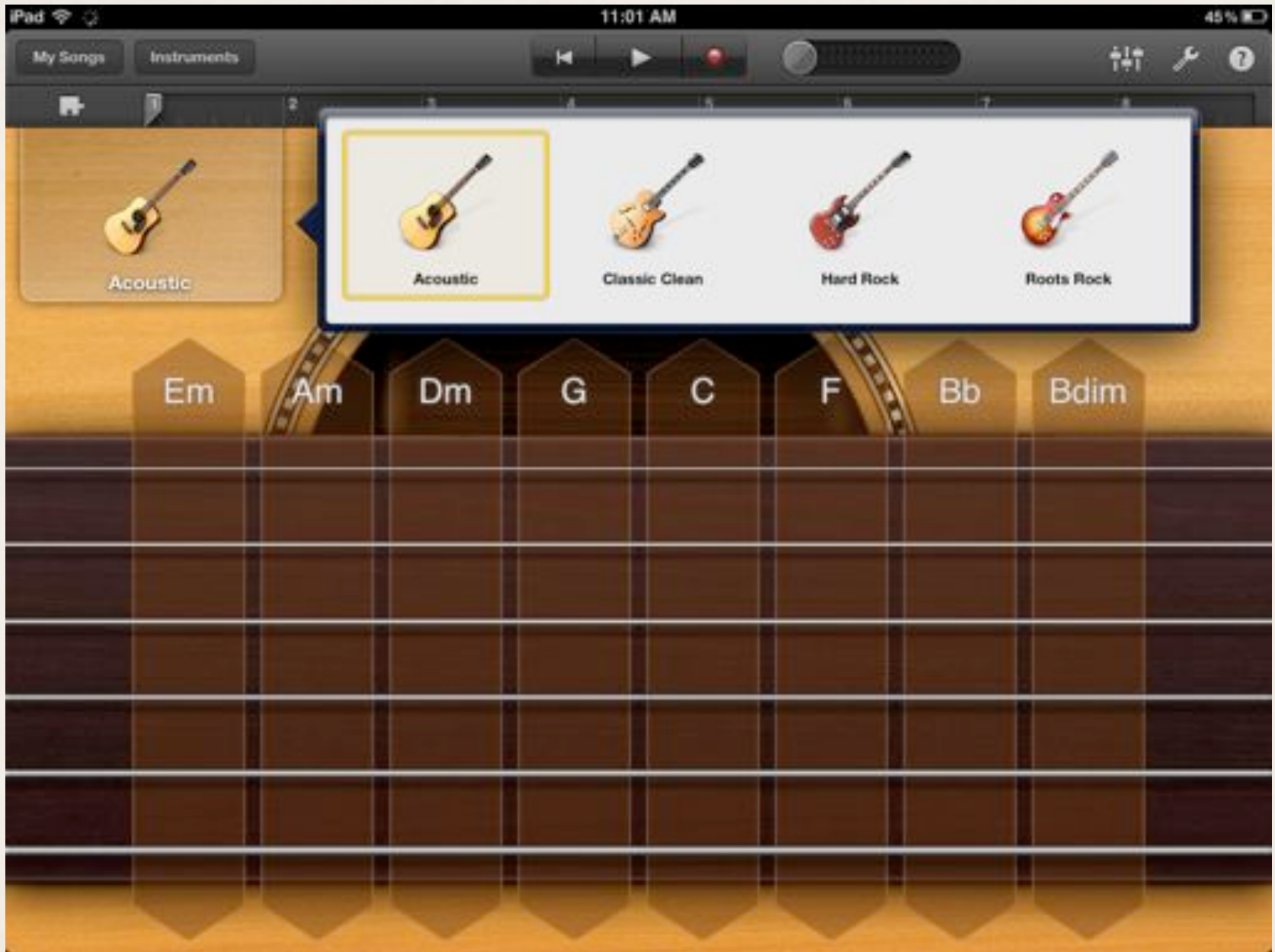


❖ Celtic Harp



❖ Voice Band









◀ ▶ 000 / 000 ▶ ●



SOFT SUST ARP DRUMS

◀ Piano ▶

NONE PITCH MOD BOTH

LESS OCTAVES

MORE OCTAVES



KEY C Blues (Pentatonic)

		4						5			

BEAUTIFUL FLOWER

Words and Music by
INDIA ARIE and JOYCE SIMPSON

Moderately slow $\text{♩} = 72$

Chords: G(m7), G(m7/C), F(m7), F(m7/B), G(m7), G(m7/C)

(recal ad lib.)

mp

Chords: F(m7), F(m7/B), Verse 1: G(m7), G(m7/C), F(m7), F(m7/B)

Verse 1:
mp
sing your sweet heart

Hmm... This is a song for — ev-er-y girl, who's,

Chords: G(m7), G(m7/C), F(m7), F(m7/B)

er - er - bee

AA Text Comments OFF Show Hide

Highlighter

Pen

size: [slider]

color: [black] [red] [blue] [green] [orange] [pen icon]

My Notes Notes Off Delete All Transpose

© 2007 MB MUSIC CORP.

All Rights Reserved

Applications: Wade's Top Communication App Picks



❖ TalkBoard



❖ Prologue Pro



❖ Speak it!



❖ Choice Board Creator



❖ Preference Assessment



❖ Conversation Builder



❖ Stories to Learn



❖ iMean



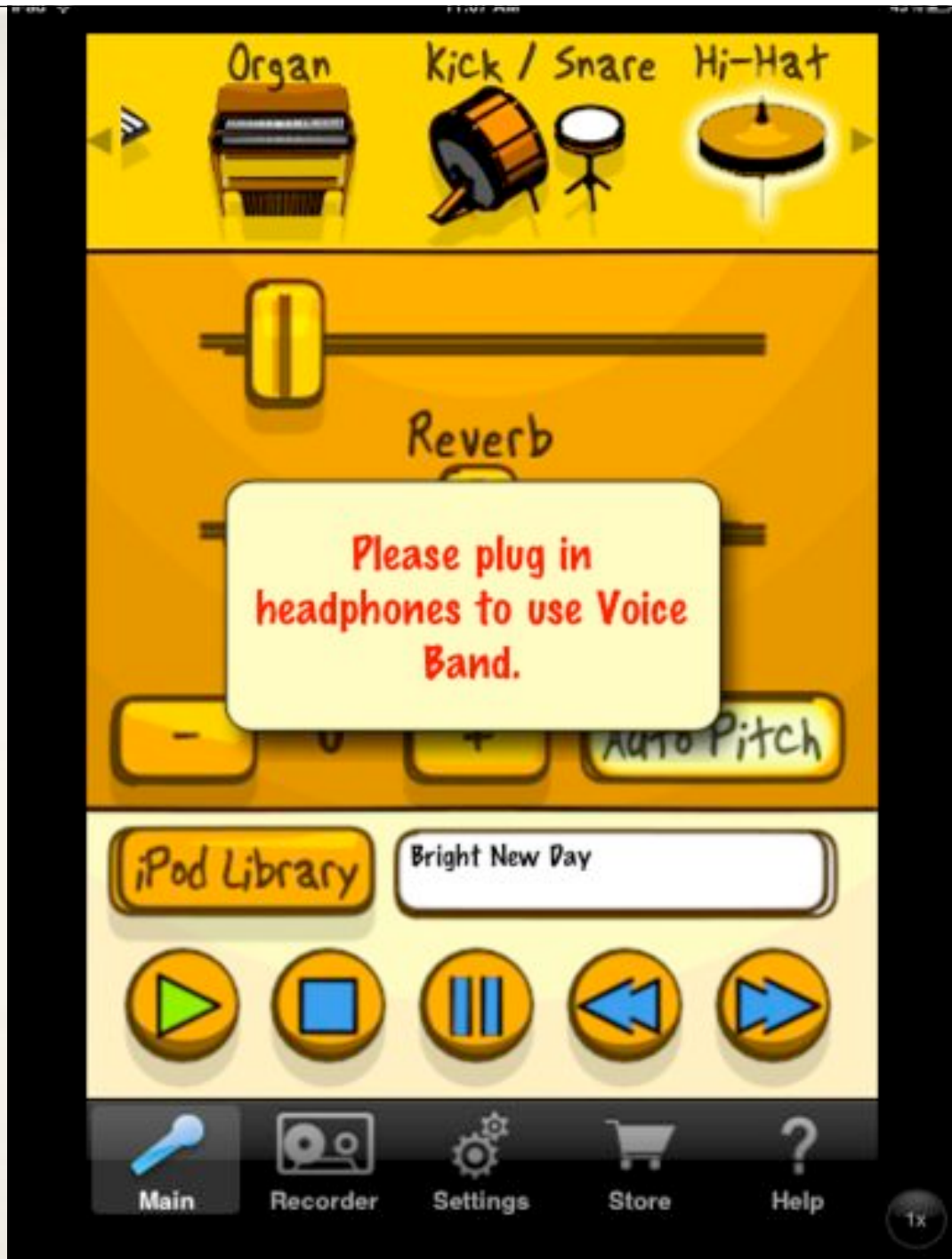
❖ iASL



❖ Emotions



❖ AutismXpress



What are you guys doing?

You are jumping in the lake.

Can all of you swim?



Skip Conversation



Video examples



<http://www.youtube.com/watch?v=Bc9JC5EgUCY>

<http://www.youtube.com/watch?v=O0yPEHmZ2Zs>

iPad

11:16 AM

41%

Mode: Play

TalkBoard



Users/Boards





Home



Basics



Categories



Comments



Help



Hi, Bye



I need



I want



Keyboard



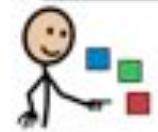
Manners



My Spaces



Questions



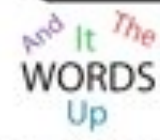
Quick Sets



Spaces



Starters



Word Spaces



Yes, No, Maybe



..?!



Applications: Wade's Top Productivity App Picks



* Songwriter's Pad



* Guitar tuner



* Ultimate Guitar App



* Pages, Keynote, Word



* ABC Notes



* Dictionary



* Braille coder/Braille writer

Applications: Wade's Top Education Materials App Picks



✦ Build a Word



✦ Unscrambler



✦ Speak it!



✦ Atlas

Tips and Tricks

- * Replace Me- select a word by double tapping
- * Hold typewriter keys for more options and punctuation choices
- *

Tips and Tricks

- ❖ iRig

- ❖



Reimbursement Documents

- ❖ how will this device specifically benefit the student
- ❖ current issues or needs not being meet
- ❖ collaboration with another team member or therapy professional
- ❖ behaviors occurring due to communication roadblocks
- ❖ cost effective- MT able to program and maintain the device
- ❖ observations / video clips of successful interaction
- ❖ any past referrals or evaluation for alternate communication

